

FOLLOWING DIMENSIONS FOR ALL MATERIALS,  
NON-MACHINEABLE AND MACHINEABLE

*NOTE	MIN	MAX
A NONMAGNETIC	0.040	0.312
B MAGNETIC**	0.040	0.187

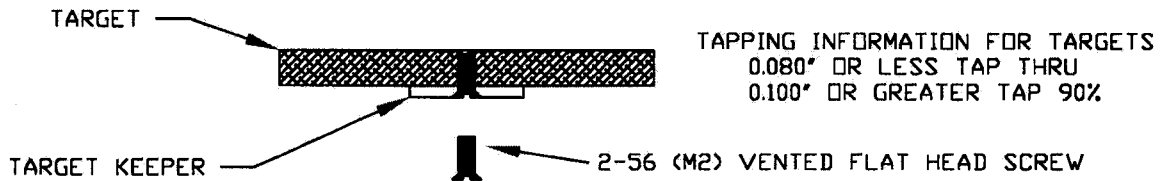
\*\* THICKNESS OF A MAGNETIC TARGET DEPENDS  
ON THE PERMEABILITY OF THE MATERIAL

B	11-30-98	REDRAWN / UPDATE BLOCK AND TOLERANCES
A	N/A	PRODUCTION RELEASE
REV	DATE	DESCRIPTION OF CHANGE
MATERIAL: SPECIFY		
FINISH: 64		
CNC FILE: N/A		
ACAD FILE: L200-01		
THE INFORMATION ON THIS DRAWING IS PROPRIETARY AND MAY NOT BE USED, COMMUNICATED, OR REPRODUCED WITHOUT WRITTEN PERMISSION		

<b>US INCORPORATED</b>			
TITLE: <b>2" MAK TARGET</b>			
SIZE	TOLERANCES UNLESS NOTED	DRAWING NUMBER	REV
<b>A</b>	XX ±0.01 XXX ±0.005 ANGLES 30.5° MAX BREAK EDGE 0.01	<b>L200-01</b>	<b>B</b>
SCALE: FULL	DVN BY: NWM	DATE: 11-30-98	SHEET: 1 OF 1

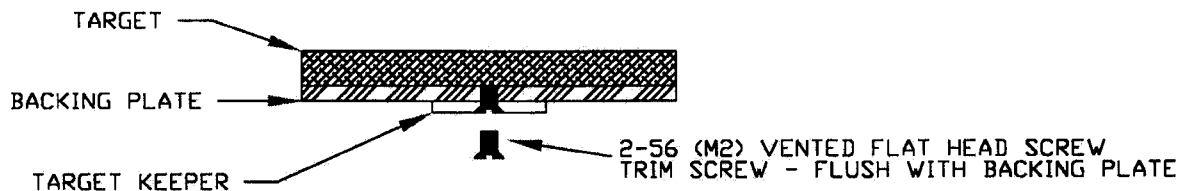
# 2" MAK TARGET MOUNTING OPTIONS

## TARGET ATTACHED TO TARGET KEEPER WITH SCREW



**NOTE:** SEE DWG# L200-02 TARGET KEEPER FOR SPECIFICATIONS

## TARGET BONDED TO BACKING PLATE WITH ATTACHED KEEPER



BOND TARGET TO BACKING PLATE CONCENTRIC TO  $\pm 0.005$   
 BOND MUST WITHSTAND 220° C MAXIMUM TEMPERATURE

**NOTE:** SEE DWG# L200-BP BACKING PLATE SPECIFICATIONS

C 11-18-99  
 B 11-10-98  
 A 10-18-98

REMOVED BOND INFO  
 REDRAWN / TOLERANCE AND NOTE CHANGES  
 PRODUCTION RELEASE

REV	DATE	DESCRIPTION OF CHANGE
MATERIAL: SPECIFY		
FINISH: ALL SURFACES 32/ -NO BURRS		
CNC FILE: N/A		
ACAD FILE: L200-01M		

THE INFORMATION ON THIS DRAWING IS PROPRIETARY  
 AND MAY NOT BE USED, COMMUNICATED, OR REPRODUCED WITHOUT WRITTEN PERMISSION

US INCORPORATED

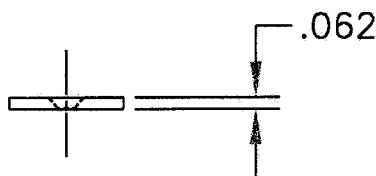
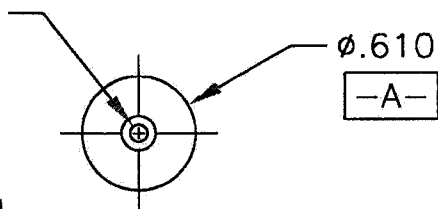
TITLE: 2" MAK TARGET MOUNTING OPTIONS			
SIZE A	TOLERANCES UNLESS NOTED XX ±0.01 XXX ±0.005 ANGLES 25.5° MAX BREAK EDGE 0.01	DRAWING NUMBER L200-01M	REV C
SCALE: FULL	DWN BY: NWM	DATE: 11-10-98	SHEET: 1 OF 1

# 2" MAK TARGET KEEPER OPTIONS

USE IF ATTACHING TARGET KEEPER  
TO BACKING PLATE OR DIRECTLY TO TARGET\*\*

Ø.094 THRU  
C'SINK 82° X Ø.185  
FOR 2-56 (M2) VENTED  
FLAT HEAD SCREW  
SCREW HEAD MUST  
FIT FLUSH WITH BOTTOM

Ⓞ .002 | A



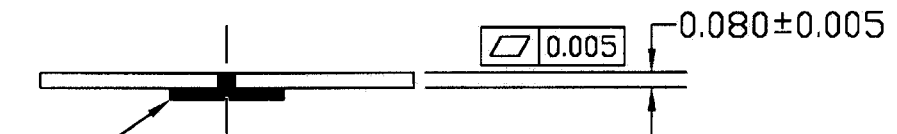
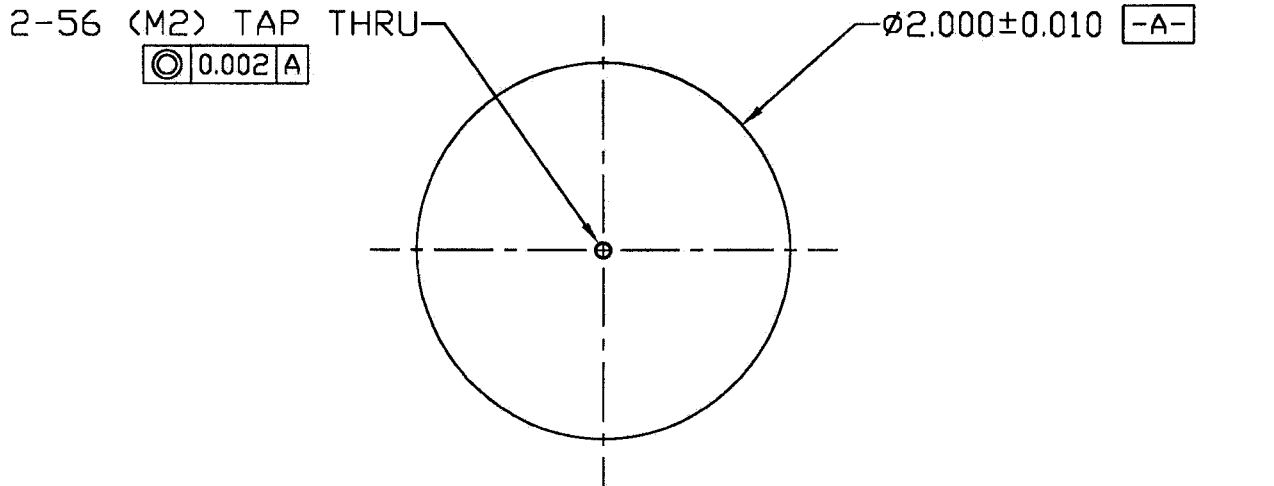
\*\* NOTE: SEE DWG# L200-01M FOR TARGET MOUNTING OPTIONS

US INCORPORATED

REV	DATE	DESCRIPTION OF CHANGE
		MATERIAL: 1010 - 1018 CRS
		FINISH: ALL SURFACES 32/ -NO BURRS
		CNC FILE: N/A
		ACAD FILE: L200-02
THE INFORMATION ON THIS DRAWING IS PROPRIETARY AND MAY NOT BE USED, COMMUNICATED, OR REPRODUCED WITHOUT WRITTEN PERMISSION		

TITLE: 2" MAK TARGET KEEPER			
SIZE A	TOLERANCES UNLESS NOTED SEE 2.01 SEE 2.02 ANGLES ±.5° MAX BREAK EDGE 0.01	DRAWING NUMBER L200-02	REV
SCALE:	DWN BY: PM	DATE: 2-18-00	SHEET: 1 OF 1

# 2" MAK BACKING PLATE WITH SCREW



L200-02 TARGET KEEPER  
(SEE DWG# L200-02 FOR TARGET KEEPER SPECIFICATIONS)

ATTACH TARGET KEEPER TO BACKING PLATE CONCENTRIC TO  $\pm 0.005$   
USE 2-56 (M2) VENTED FLAT HEAD SCREW  
SCREW HEAD MUST BE FLUSH WITH TARGET KEEPER SURFACE

**NOTE:** CONCENTRICITY IS IMPORTANT IN MAINTAINING MAGNETIC PATH  
TO TARGET AND CENTERING TARGET ON CATHODE

B	11-10-98	NO HOLE REVISION
A	N/A	PRODUCTION RELEASE
REV	DATE	DESCRIPTION OF CHANGE
MATERIAL: OFHC COPPER		
FINISH: ALL SURFACES 32/ -NO BURRS		
CNC FILE: N/A		
ACAD FILE: L200-BP		
THE INFORMATION ON THIS DRAWING IS PROPRIETARY AND MAY NOT BE USED, COMMUNICATED, OR REPRODUCED WITHOUT WRITTEN PERMISSION		

<b>US INCORPORATED</b>			
TITLE: 2" MAK BACKING PLATE WITH SCREW			
SIZE	TOLERANCES UNLESS NOTED	DRAWING NUMBER	REV
A	XXX ±0.01 XXX ±0.005 ANGLES 30.5° MAX BREAK EDGE 0.01	L200-BP	B
SCALE:	FULL	DWN BY: NWM	DATE: 11-10-98 SHEET: 1 OF 1